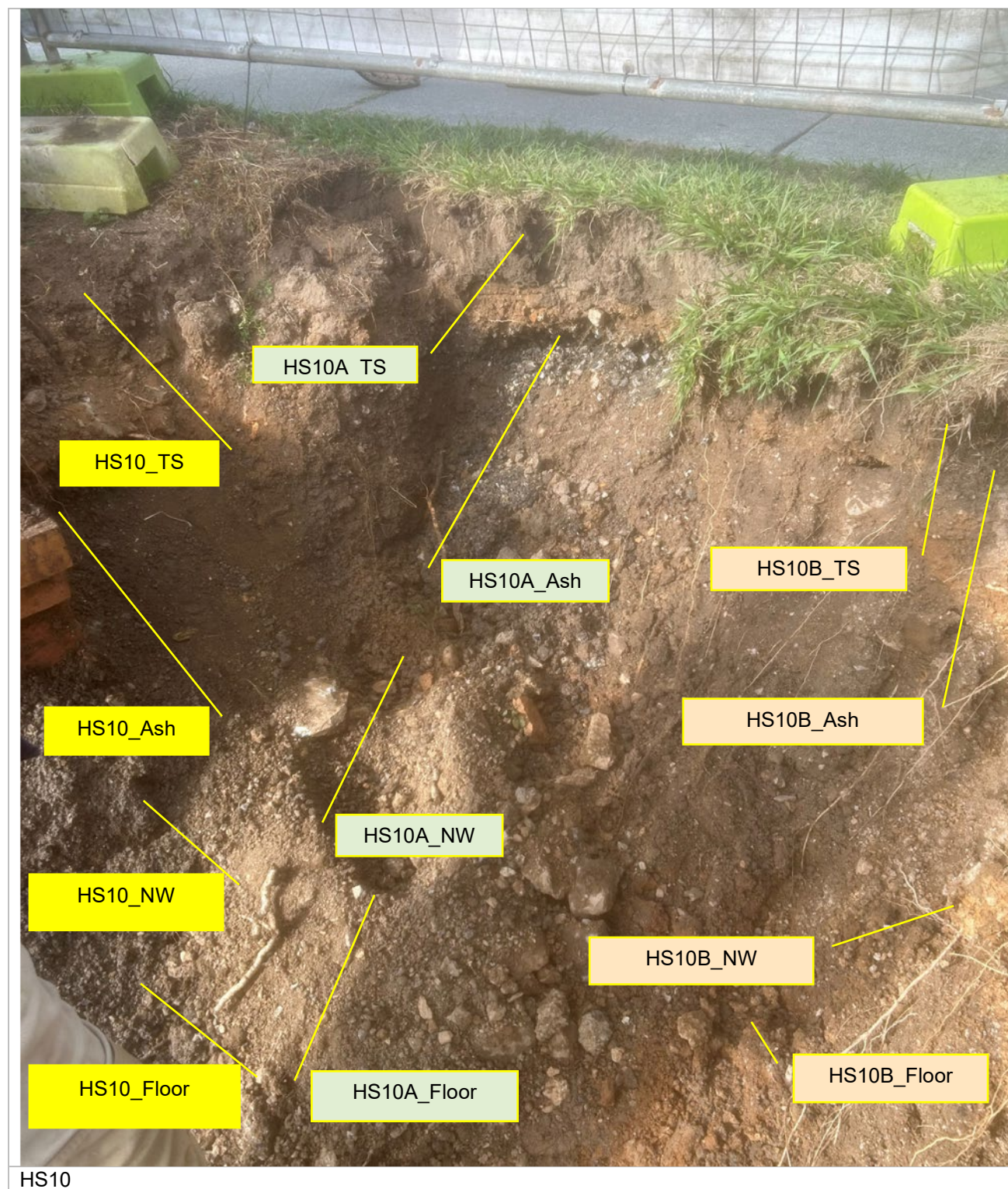
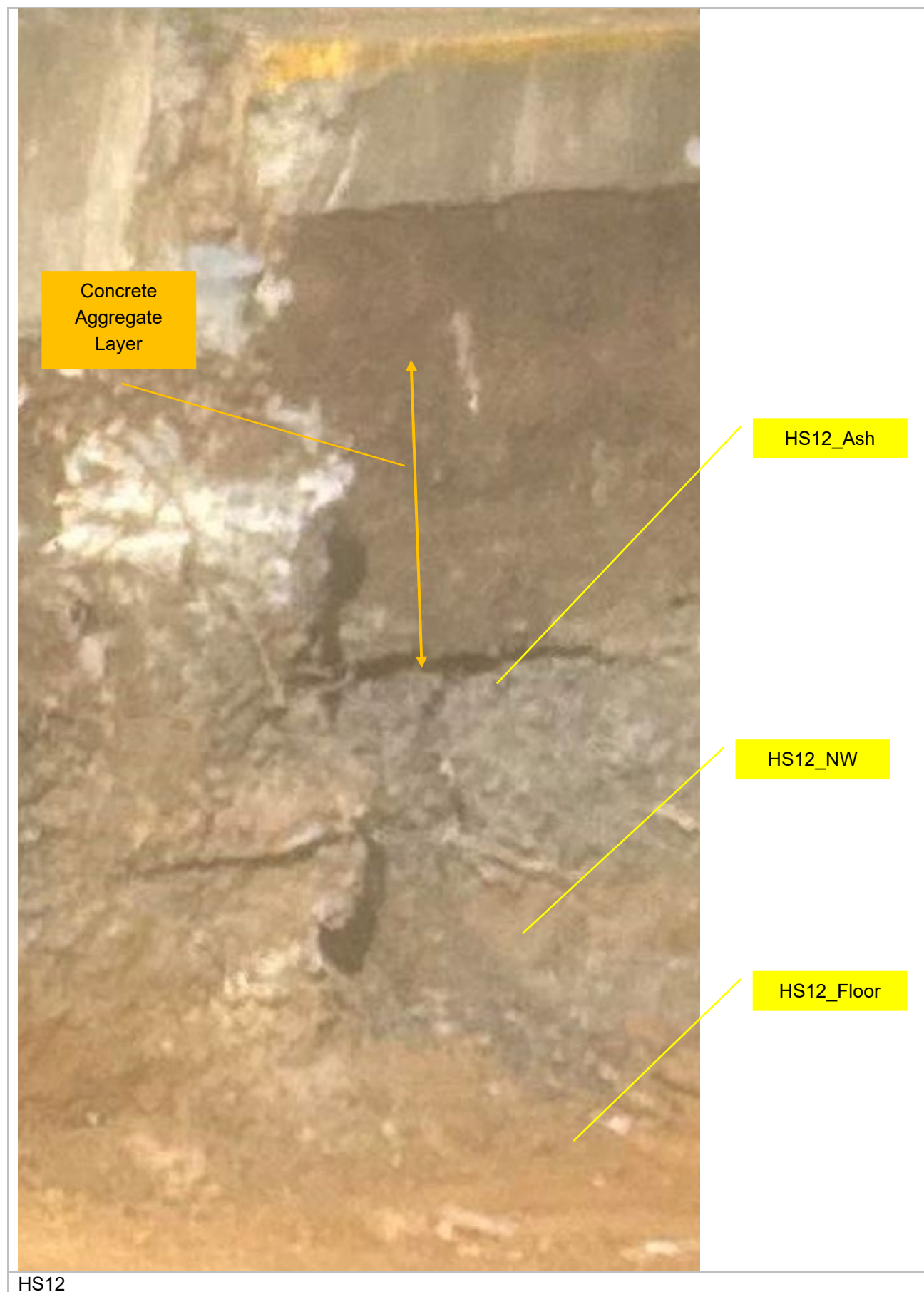
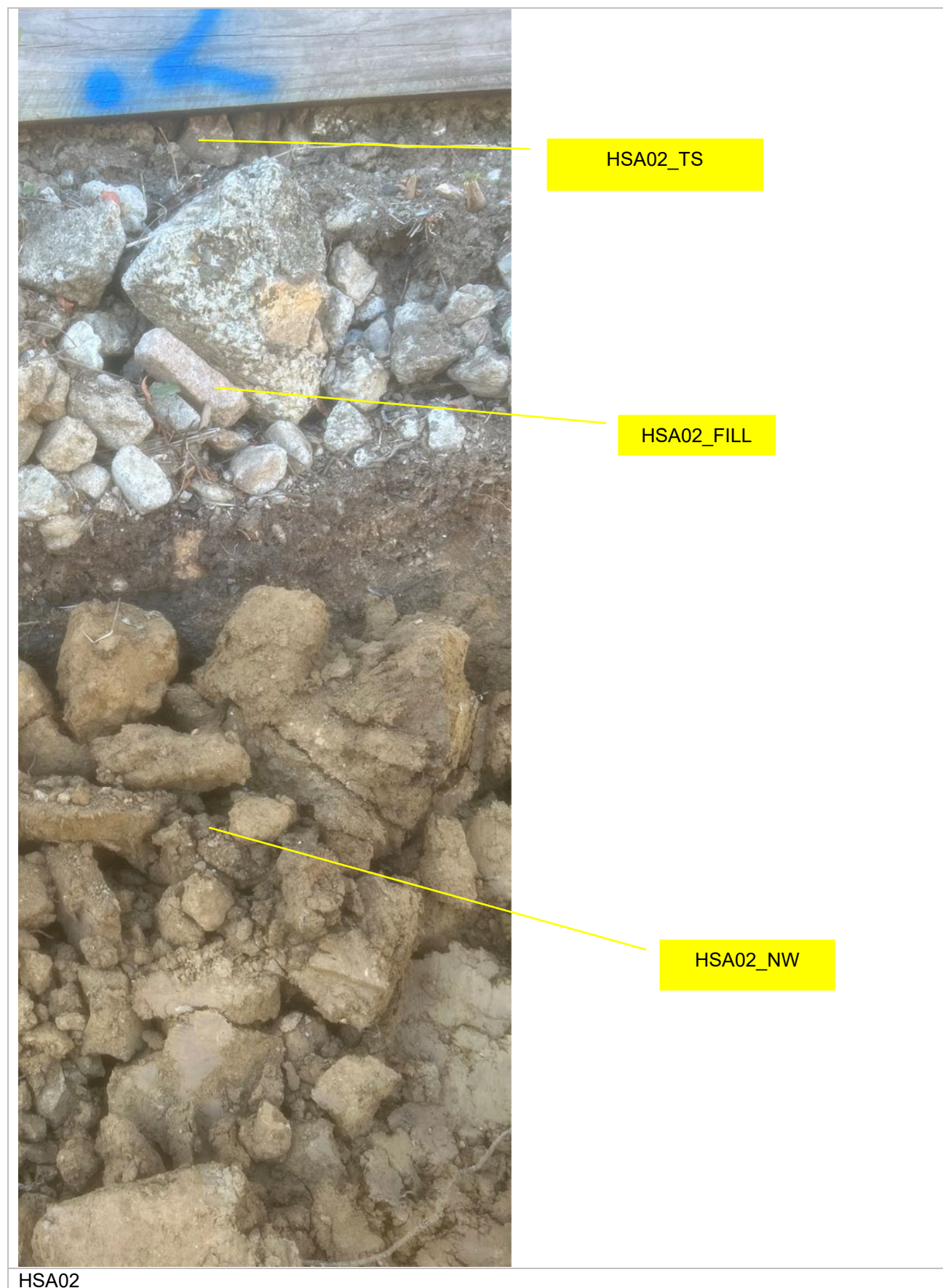


HS08











HSA03_TS

HSA03_FILL

HSA03_NW

HSA03



HSA04_TS

HSA04_FILL

HSA04_NW

HSA04



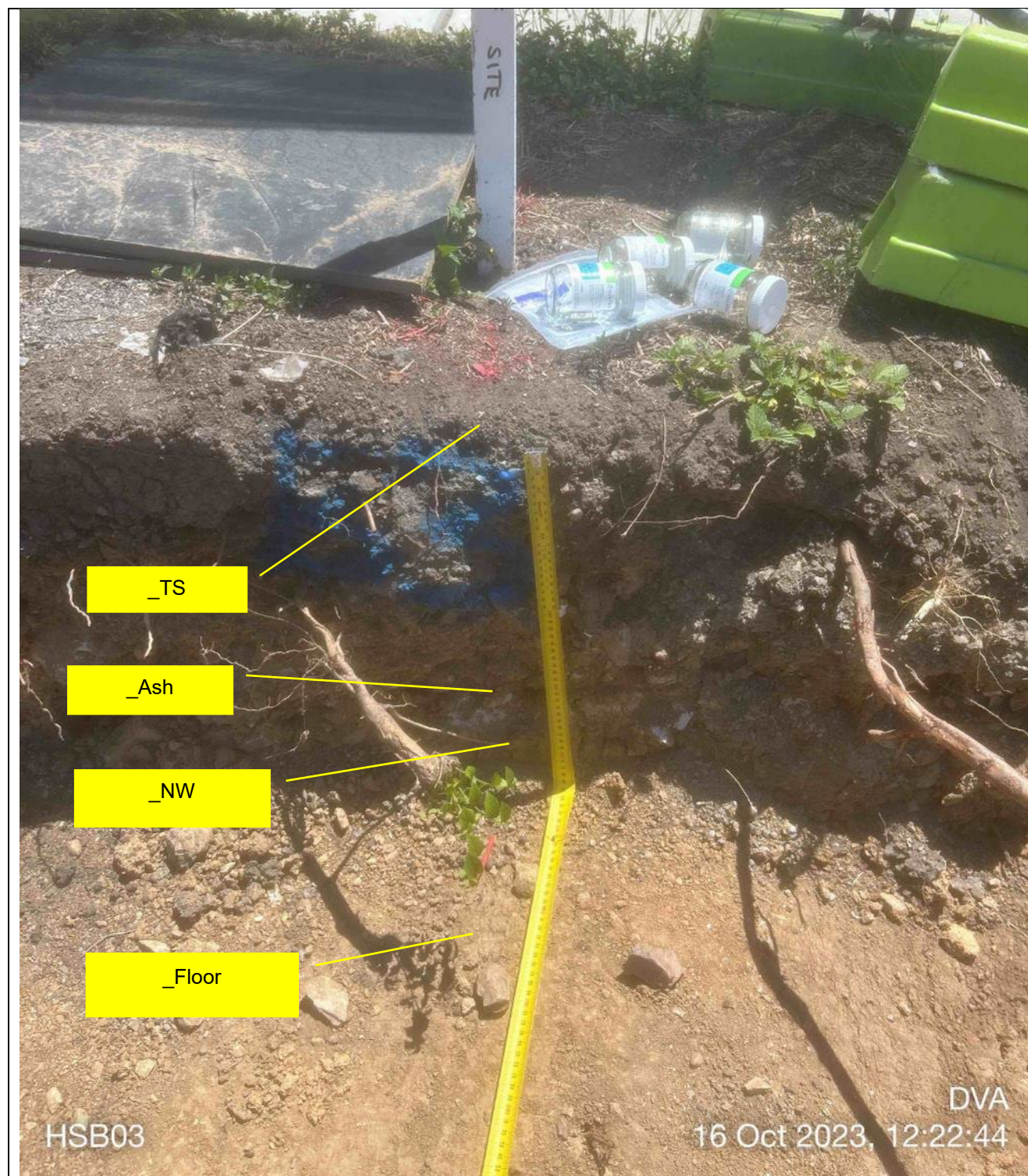
Pipe Trench excavation



HSB01



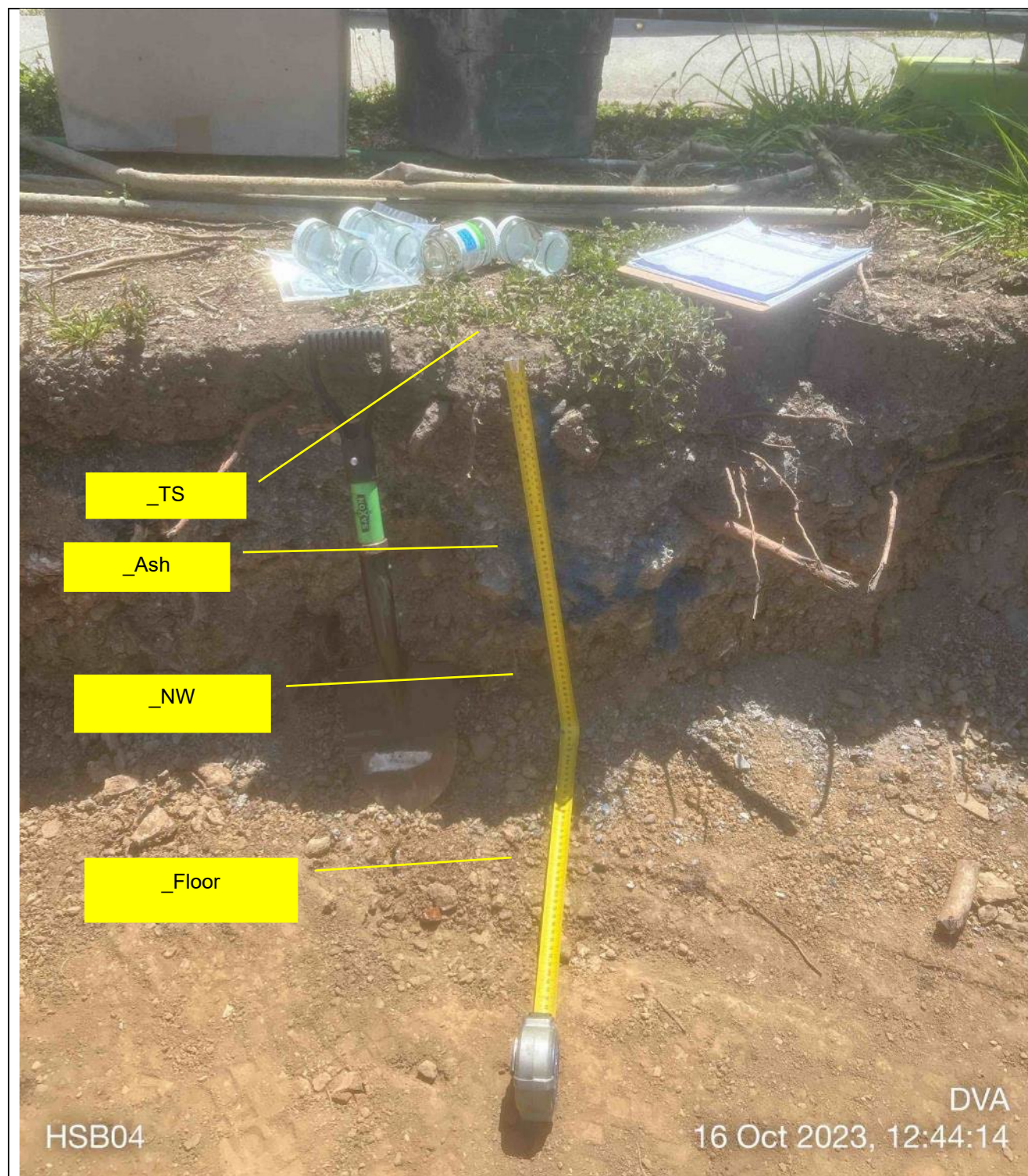
HSB02



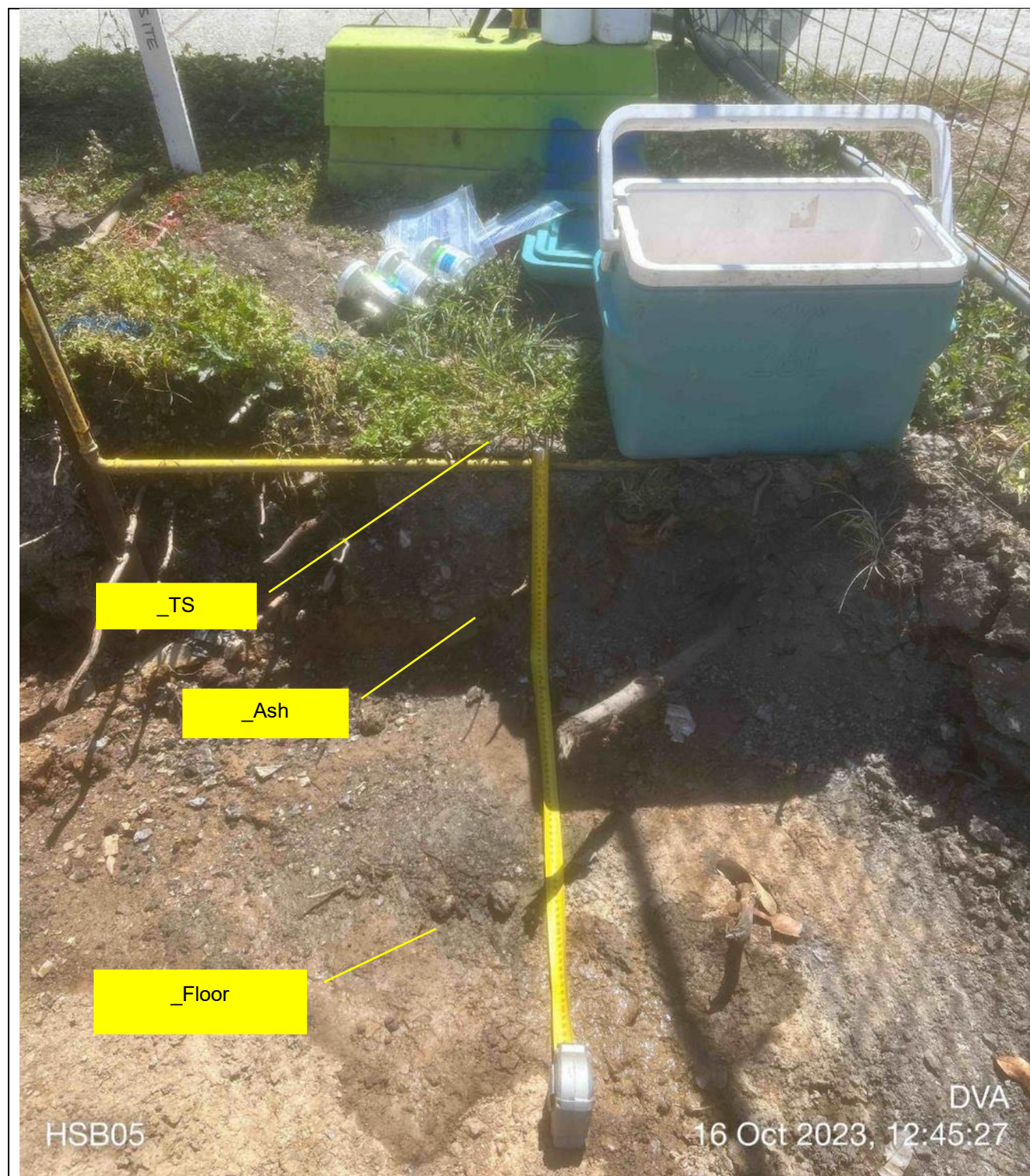
HSB03

DVA
16 Oct 2023, 12:22:44

HSB03



HSB04

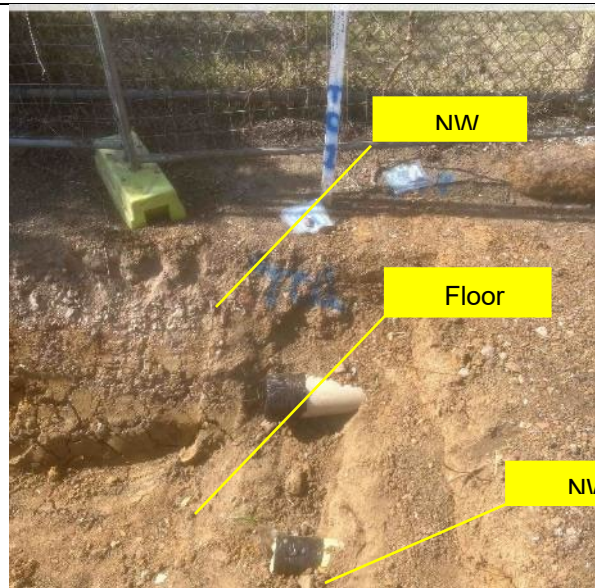


HSB05

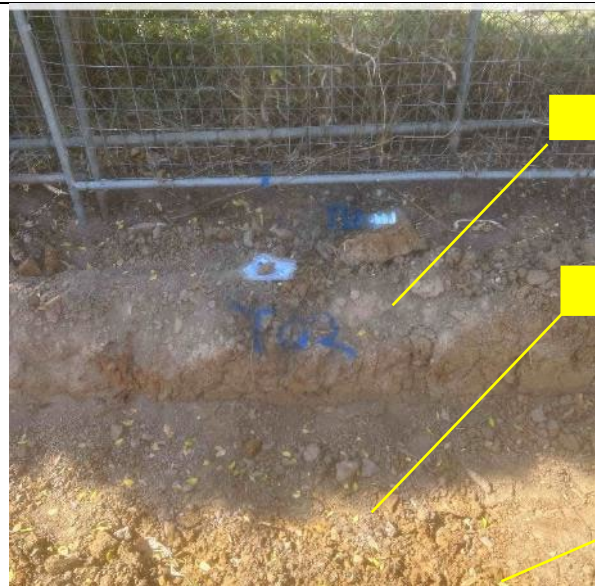
DVA
16 Oct 2023, 12:45:27

HSB05

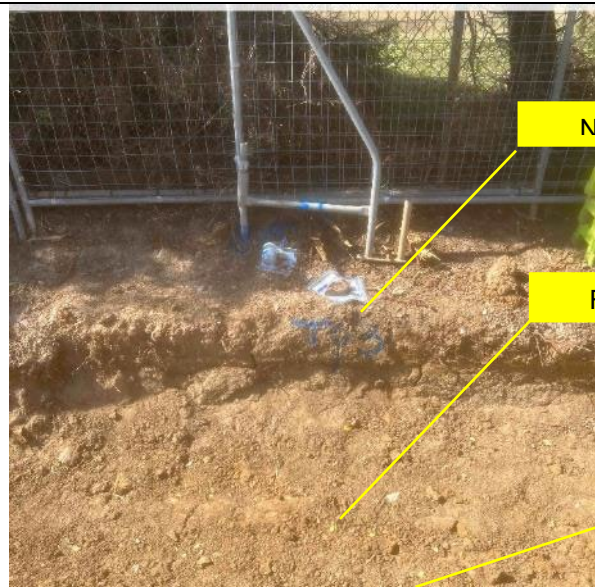




T01



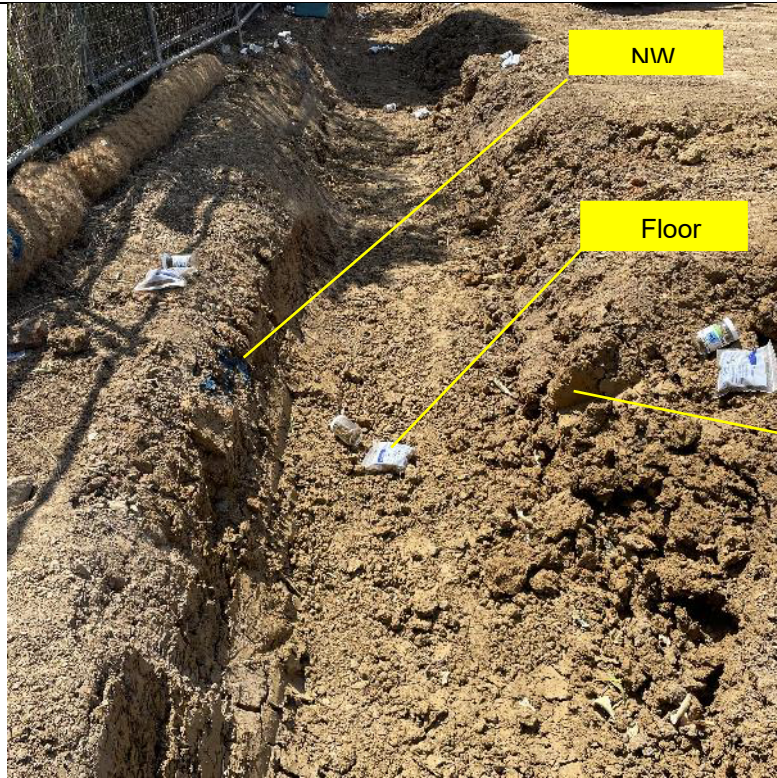
T02



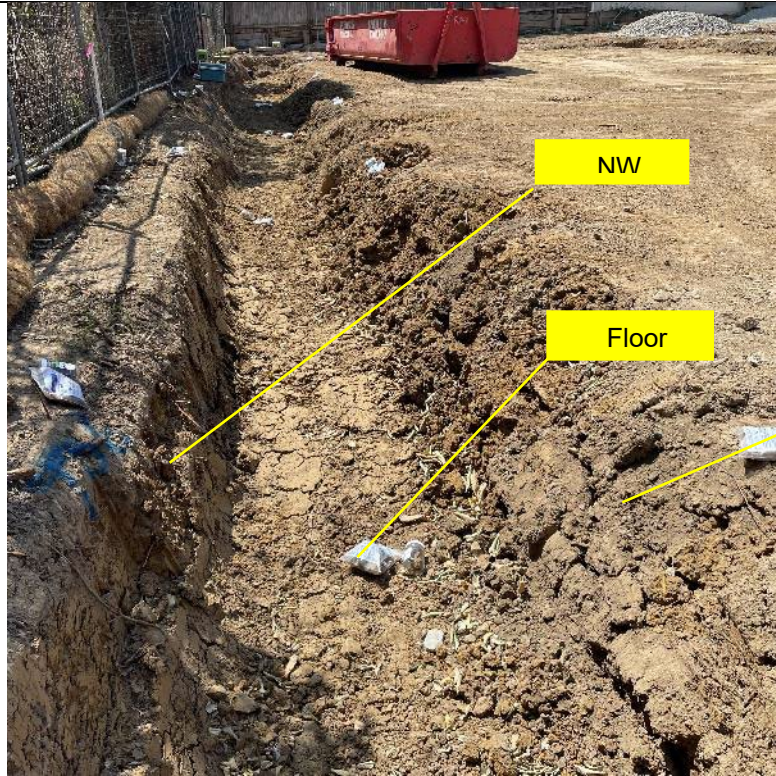
T03



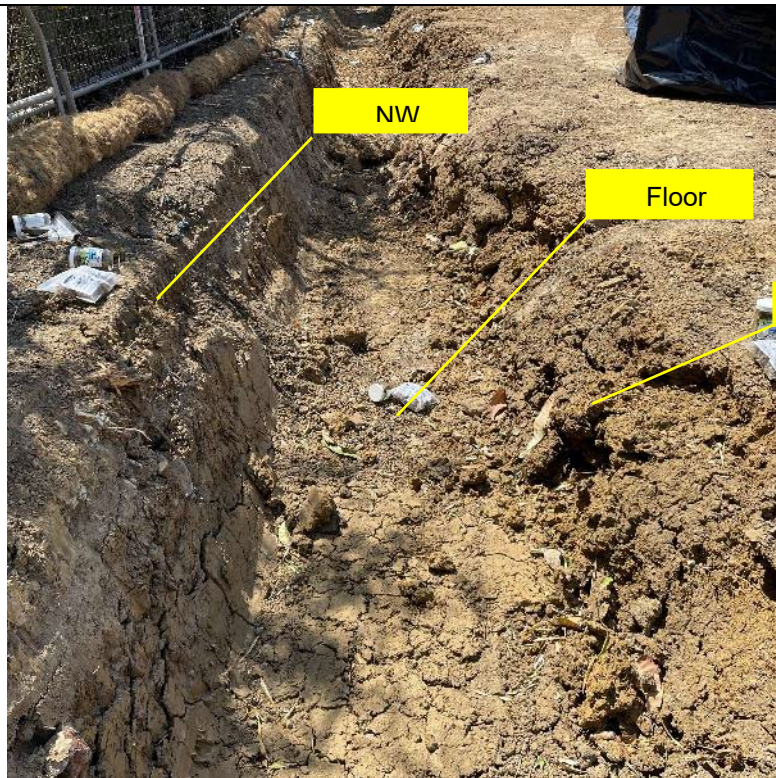
T04



T05



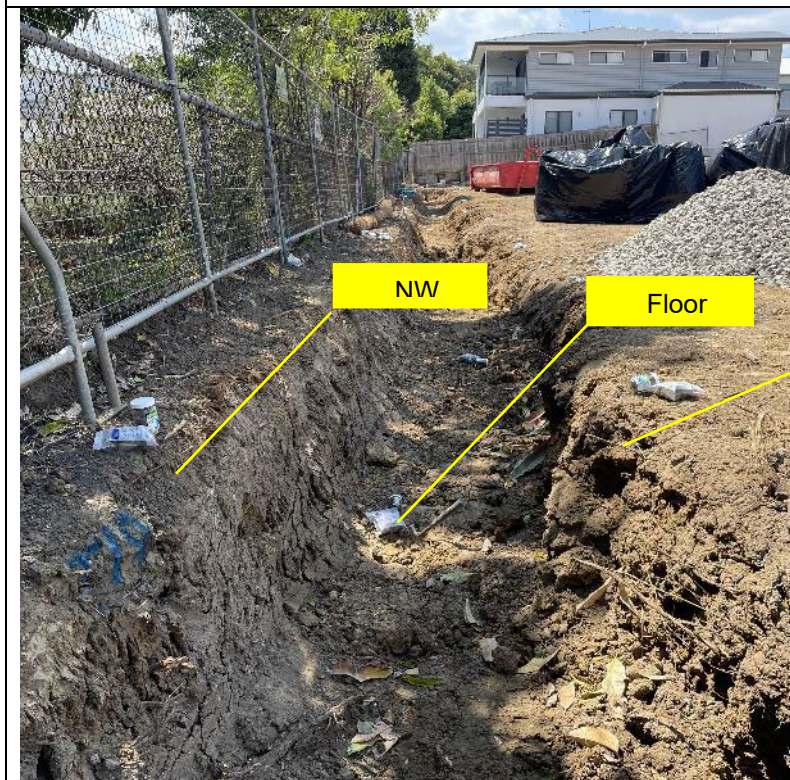
T06



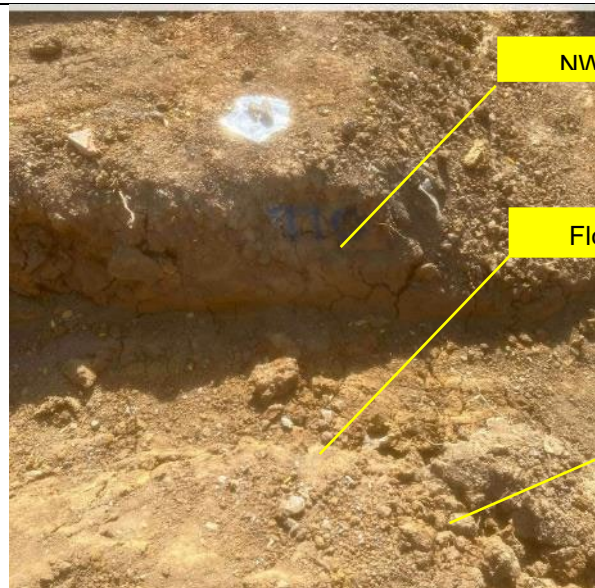
T07



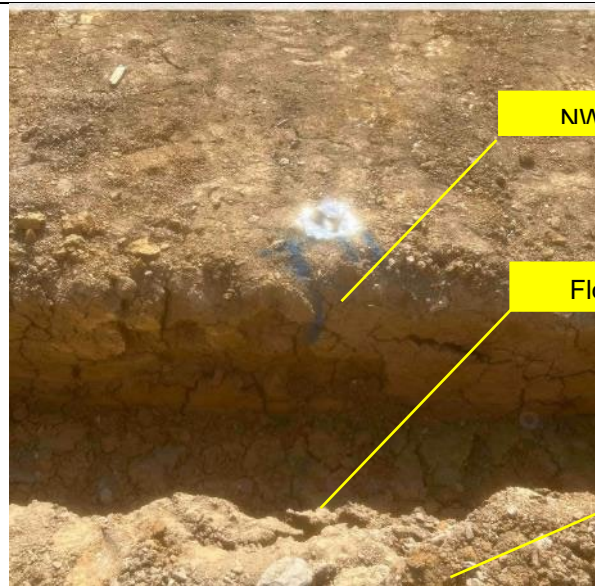
T08



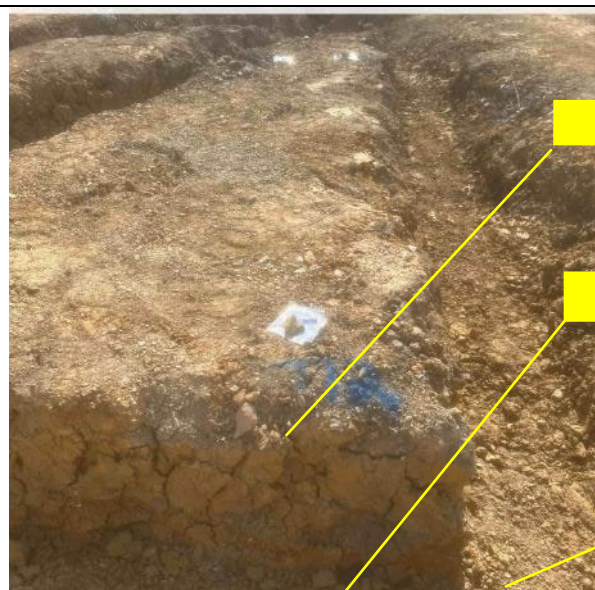
T09



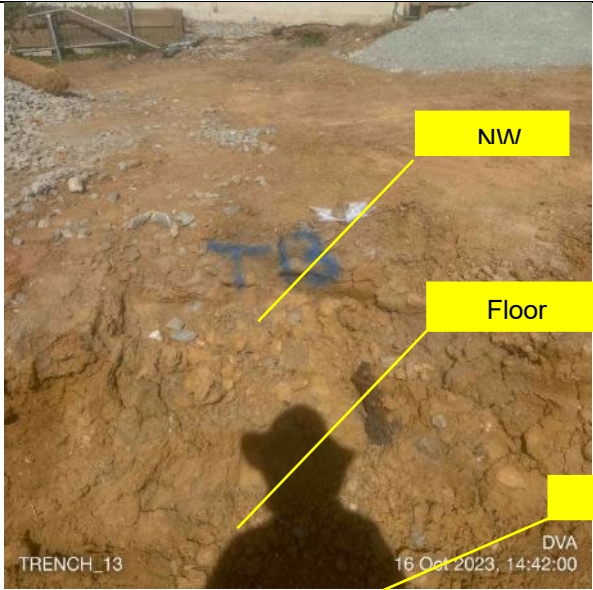
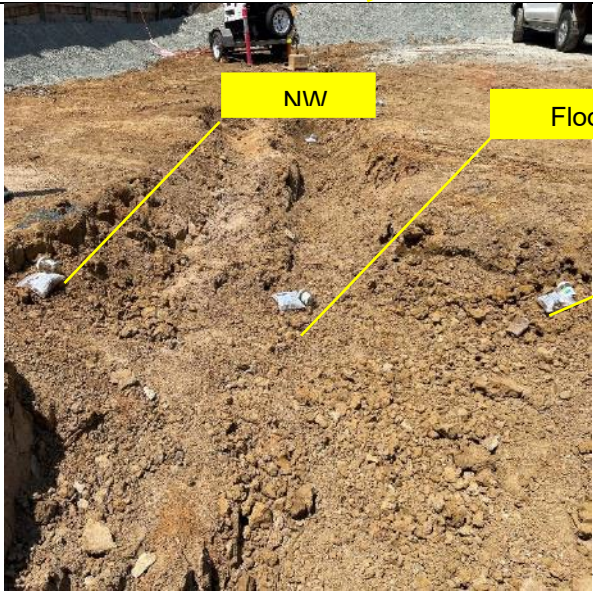
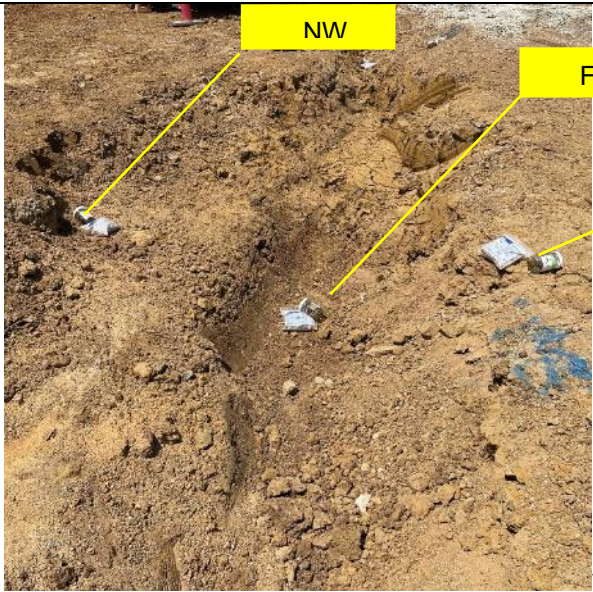
T10

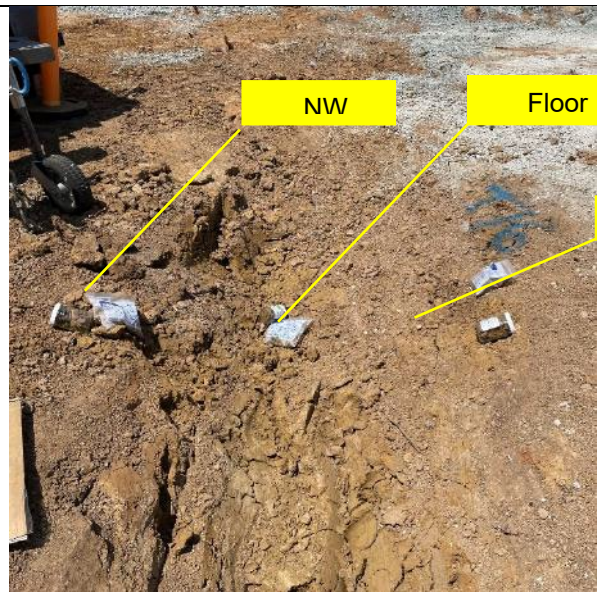


T11



T12

 <p>TRENCH_13</p> <p>16 Oct 2023, 14:42:00</p> <p>DVA</p> <p>NW</p> <p>Floor</p> <p>NW</p>	<p>T13</p>
 <p>NW</p> <p>Floor</p> <p>NW</p>	<p>T14</p>
 <p>NW</p> <p>Floor</p> <p>NW</p>	<p>T15</p>



T16



T17



T18



T19



T20



T21



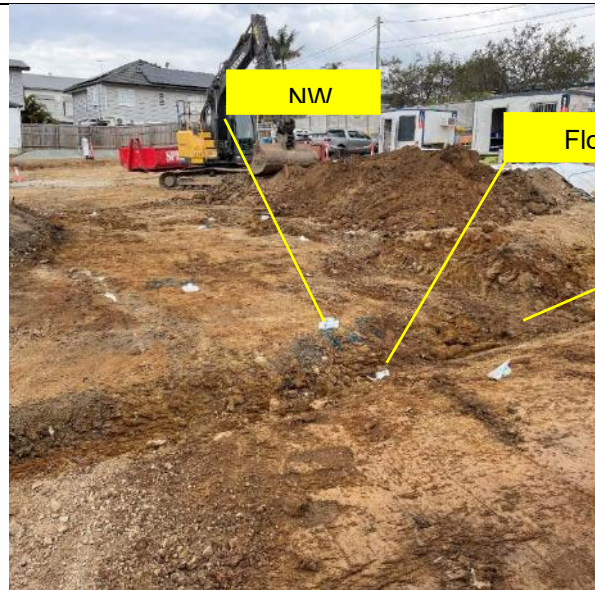
T22



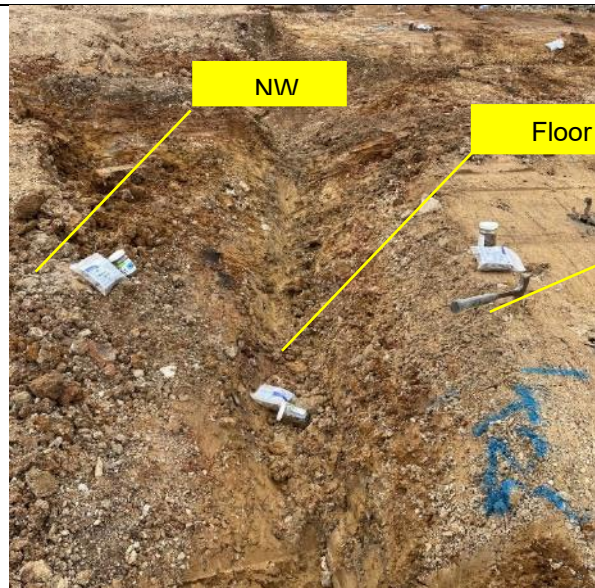
T23



T24



T25



T26



T27



Floor

A01



Floor

A02



Floor

A03



A04



A05



A06



Floor

A07



Floor

A08



Floor

A09



A10



B01



B02



B03



B04



B05



Floor

B06



Floor

B07



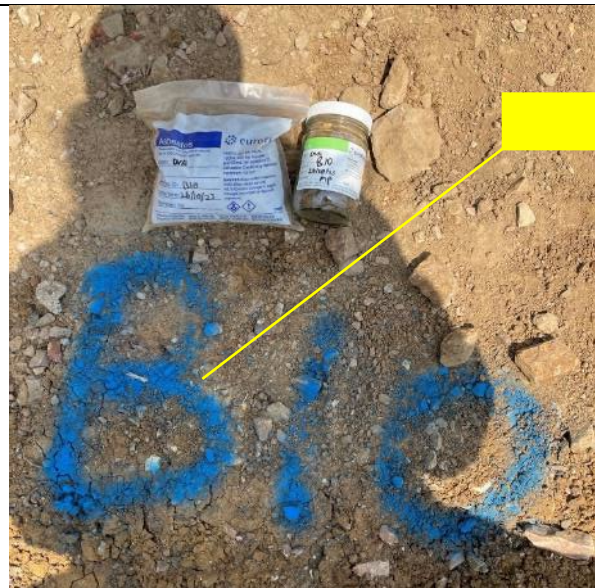
Floor

B08



Floor

B09



Floor

B10



Floor

C01 (Note C01 was in the driveway. Underlying natural materials in the driveway were accessed through validation samples DW-B1 to DW-B4).



Floor

C02 (Note C02 was in the driveway. Underlying natural materials in the driveway were accessed through validation samples DW-B1 to DW-B4).



Floor

C03



Floor

C04



Floor

C05



Floor

C06



Floor

C07



Floor

C08



Floor

C09



Floor

C10



Floor

D01



Floor

D02



Floor

D03



Floor

D04



Floor

D05



Floor

D06



Floor

D07



Floor

D08



Floor

D09



Floor

D10



Floor

E01



Floor

E02



Floor

E03



Floor

E04



Floor

E05

E06 no image



G03



G04



G05



Floor

G06



Floor

G07



Floor

G08



Floor

G09



Floor

G10



Floor

H01



H02



H03



H04

	<p>Floor</p> <p>H05</p>
	<p>Floor</p> <p>H06</p>
	<p>Floor</p> <p>H07</p>



H08



H09



H10



Imported Fill

IF02



Imported Fill

IF03



Imported Fill

IF05



IF06



HSB18



HSB19





HSB21







HSB24



HSB25



HSB26



